



# ST. WILFRED'S P.G. COLLEGE

(Affiliated to the University of Rajasthan)

## 7.1.3

### Clean and green campus initiative

*Kapila*

IQAC HEAD  
St. WILFRED'S P.G. COLLEGE  
JAIPUR



*Fareeda*

Principal  
(Dr. FAREEDA HASANI)  
St. Wilfred's P.G. College  
Jaipur



# ST. WILFRED'S P.G. COLLEGE

(Affiliated to the University of Rajasthan)

## Snapshots Depicting Specific Facilities for Green Campus Initiatives

### Landscaping Trees and Plants in College Campus



*Kapila*

IQAC HEAD  
St. WILFRED'S P.G. COLLEGE  
JAIPUR



*Fareeda*

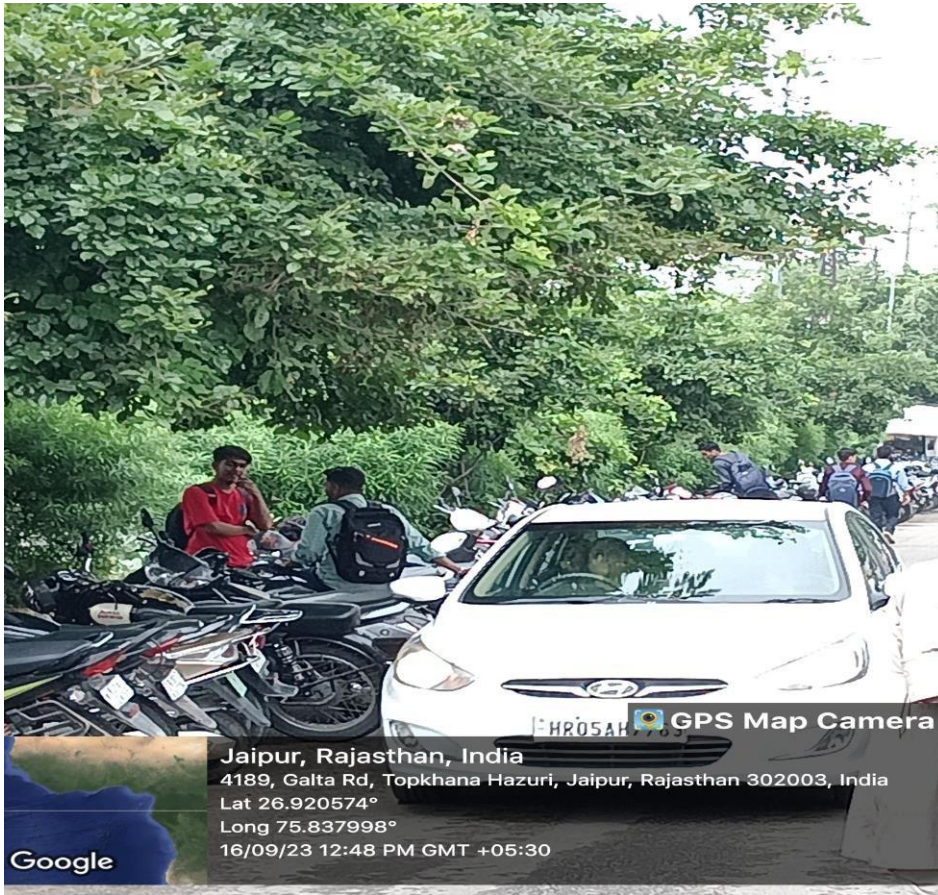
Principal  
(Dr. FAREEDA HASANI)  
St. Wilfred's P.G. College  
Jaipur



# ST. WILFRED'S P.G. COLLEGE

(Affiliated to the University of Rajasthan)

## Outer View of the College



Jaipur, Rajasthan, India  
4189, Galta Rd, Topkhana Hazuri, Jaipur, Rajasthan 302003, India  
Lat 26.920574°  
Long 75.837998°  
16/09/23 12:48 PM GMT +05:30

Google



Jaipur, Rajasthan, India  
4189, Galta Rd, Topkhana Hazuri, Jaipur, Rajasthan 302003, India  
Lat 26.920574°  
Long 75.837998°  
16/09/23 12:50 PM GMT +05:30

Google

*Kapila*

IQAC HEAD  
St. WILFRED'S P.G. COLLEGE  
JAIPUR



*Fareeda*

Principal  
(Dr. FAREEDA HASANI)  
St. Wilfred's P.G. College  
Jaipur

Sector 40, Meera Marg, Madhyam Marg, Mansarovar, Jaipur-302020  
Ph. 0141-2780436, 2780904 E-mail: [stwilfredscollge@gmail.com](mailto:stwilfredscollge@gmail.com) Website: [www.stwilfredscollge.com](http://www.stwilfredscollge.com)

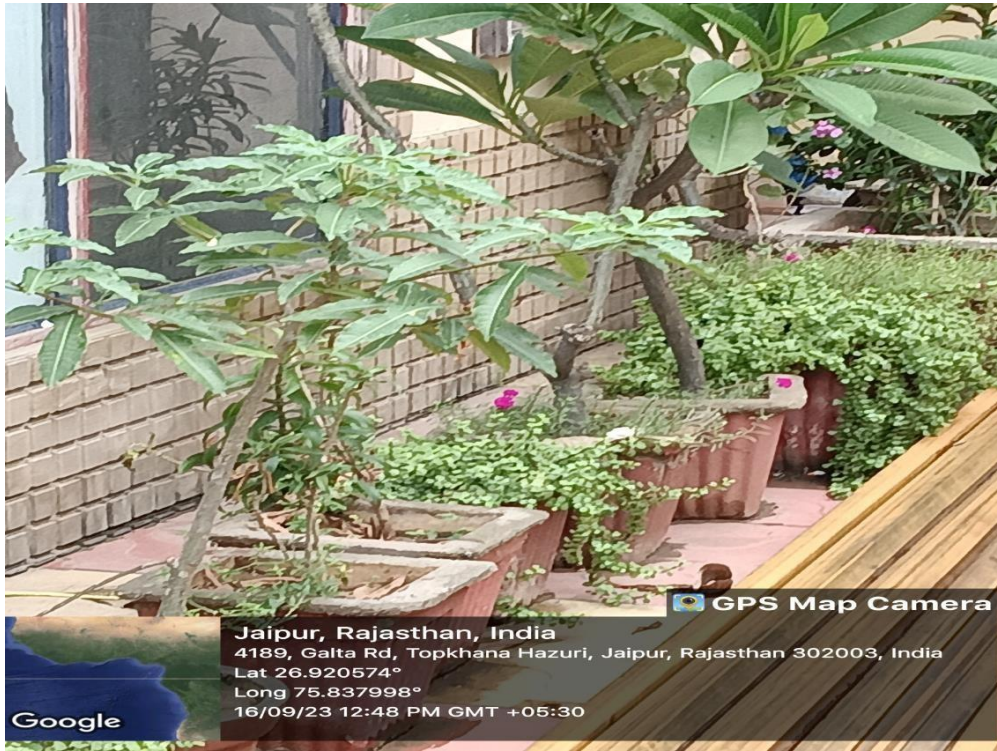
Where the mind is without fear! Where the head is held high!!



# ST. WILFRED'S P.G. COLLEGE

(Affiliated to the University of Rajasthan)

## Plants in the College Campus



GPS Map Camera

Jaipur, Rajasthan, India  
4189, Galta Rd, Topkhana Hazuri, Jaipur, Rajasthan 302003, India  
Lat 26.920574°  
Long 75.837998°  
16/09/23 12:48 PM GMT +05:30

Google



GPS Map Camera

Jaipur, Rajasthan, India  
4189, Galta Rd, Topkhana Hazuri, Jaipur, Rajasthan 302003, India  
Lat 26.920574°  
Long 75.837998°  
16/09/23 12:47 PM GMT +05:30

Google

*Kapila*

IQAC HEAD  
St. WILFRED'S P.G. COLLEGE  
JAIPUR



*Fareeda*

Principal  
(Dr. FAREEDA HASANI)  
St. Wilfred's P.G. College  
Jaipur



## Clean and green campus

### Action Taken Report

- The Institute had organized Cleanliness Drive in association with the NSS unit and IQAC, St. Wilfred PG College in different occasions like World Environment Day, Earth Day and before and after the special functions organized in the institute.
- Plantation Drives had been organized time to time in and around the campus by the institute in association with Environment Management Committee and NSS Unit. Students and staff members participate in this Plantation Programme with great enthusiasm.
- Green Campus initiatives by the institute include Water Conservation, Tree Plantation, Waste Management, and Alternative Energy. With this in mind, Green audit has been conducted by the institute.
- Slogans on Energy Conservation, Water conservation, Conservation of Greenery etc. has been placed by the institute within the campus to aware the students towards energy and greenery conservation.
- Green, Energy and Environment Audits are conducted by Advanced Centre of Environmental Studies and Sustainable Development, Mahatma Gandhi University, Kottayam in the academic year 2020-2021. As per the report of the auditing agency, the following actions are taken:
  - CFLs are replaced by LED lamps
  - Strict instructions are given to faculty, staff and students to unplug and turn off electrical appliances when not in use or after use
  - Regular check-up on the gadgets are done to improve their efficiency Periodic water quality assessment is done regularly
  - Measures are taken to sanitize water coolers.
  - Wastes produced in each department are quantified and data is prepared for the effective waste management in the campus

*Kapila*

IQAC HEAD  
St. WILFRED'S P.G. COLLEGE  
JAIPUR



*Fareeda*

Principal  
(Dr. FAREEDA HASANI)  
St. Wilfred's P.G. College  
Jaipur



# ST. WILFRED'S P.G. COLLEGE

(Affiliated to the University of Rajasthan)

- Waste management committee spearheaded by the Principal is formed for the proper monitoring of waste management activities in the campus
- Measures are taken to effectively implement green protocol in the campus.
- Staff and students are more aware of the environment;
- Students enthusiastically engage in green projects and eco-friendly initiatives;
- Green protocol is carefully upheld
- Acquired energy-efficient appliances to reduce energy use in the science departments.
- To increase the effectiveness of the devices, annual inspections are performed.
- Staff members and students are reminded to unplug and turn off electrical devices when not in use or right after usage.
- Periodic evaluations of the water quality are conducted as part of internal and external audits.
- Periodic awareness campaigns are held, as well as posters promoting the topic, to reinforce the current water management techniques.
- The installation of high-quality pipelines for collecting laboratory waste water
- Regular chlorination of the primary water sources Audit of Waste

*Kapila*

IQAC HEAD  
St. WILFRED'S P.G. COLLEGE  
JAIPUR



*Fareeda*

Principal  
(Dr. FAREEDA HASANI)